



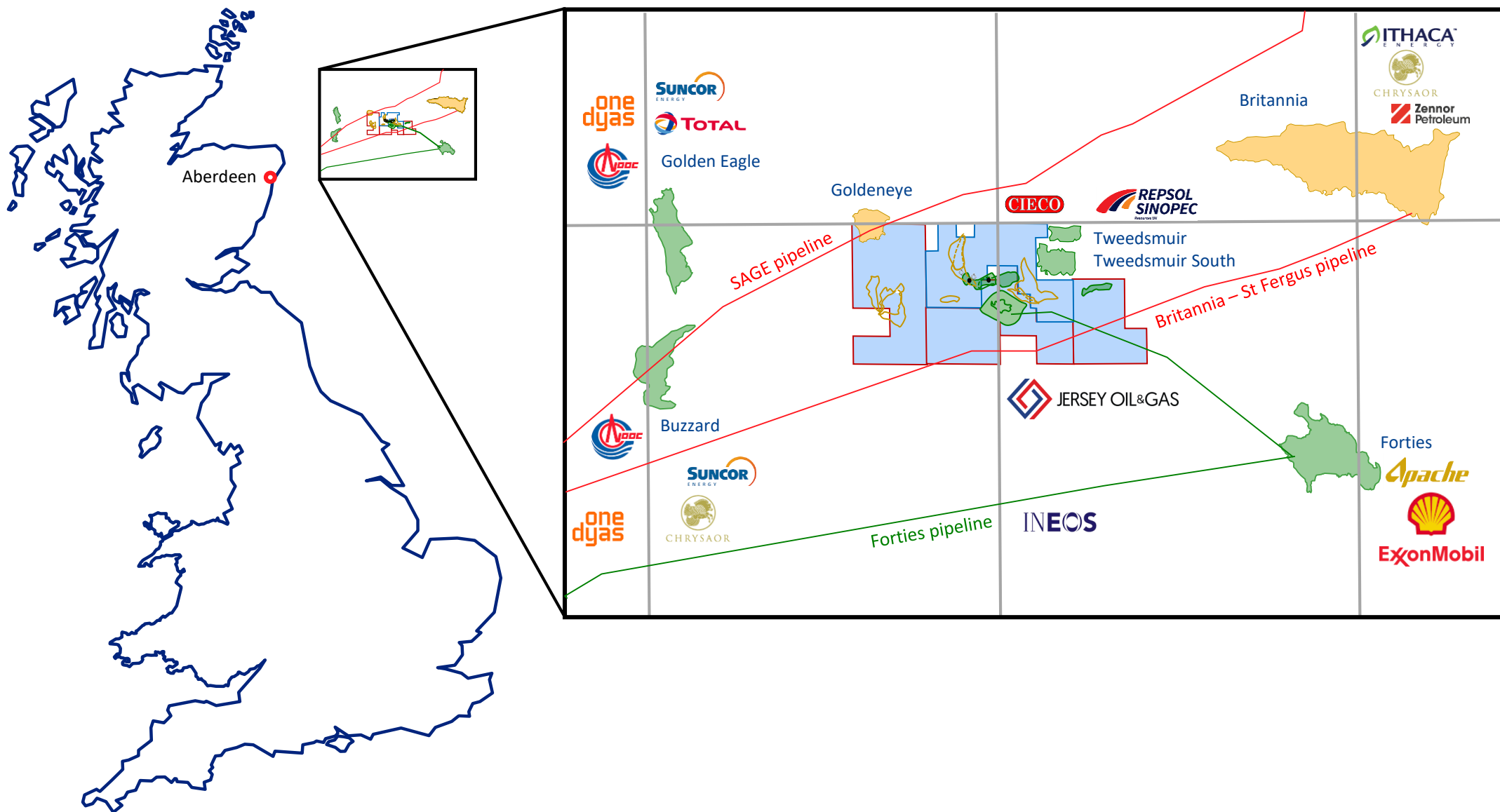
JERSEY OIL&GAS

# The Greater Buchan Area SUBSEA EXPO

11<sup>th</sup> February 2020



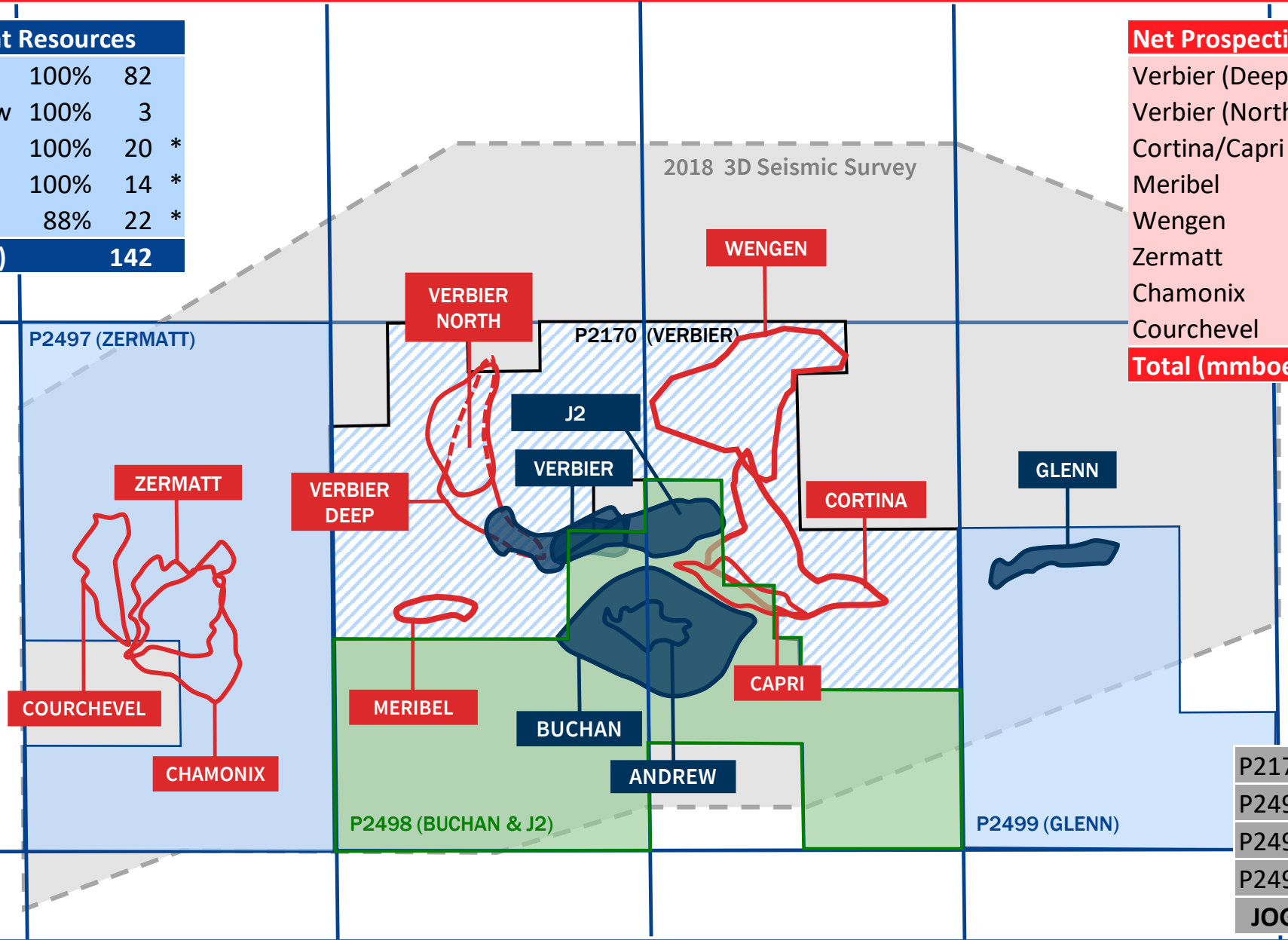
# The GBA sits in the heart of the Central North Sea



# Development ready with exploration upside

Net Contingent Resources		
Buchan	100%	82
Buchan Andrew	100%	3
J2	100%	20 *
Glenn	100%	14 *
Verbier (Main)	88%	22 *
<b>Total (mmboe)</b>		<b>142</b>

Net Prospective Resources		
Verbier (Deep)	88%	27 *
Verbier (North)	88%	6 *
Cortina/Capri	88%	66 *
Meribel	88%	9 *
Wengen	88%	53 *
Zermatt	100%	30 *
Chamonix	100%	34 *
Courchevel	100%	
<b>Total (mmboe)</b>		<b>232</b>



	Contingent Resources	Prospective Resources
P2170	22	149
P2497	-	72
P2498	105	11
P2499	14	-
<b>JOG</b>	<b>142</b>	<b>232</b>

>140mmboe discovered resources, >200mmboe exploration upside

\* Management estimates as at Jan 2020



Safer



Simpler facility



Higher Efficiency

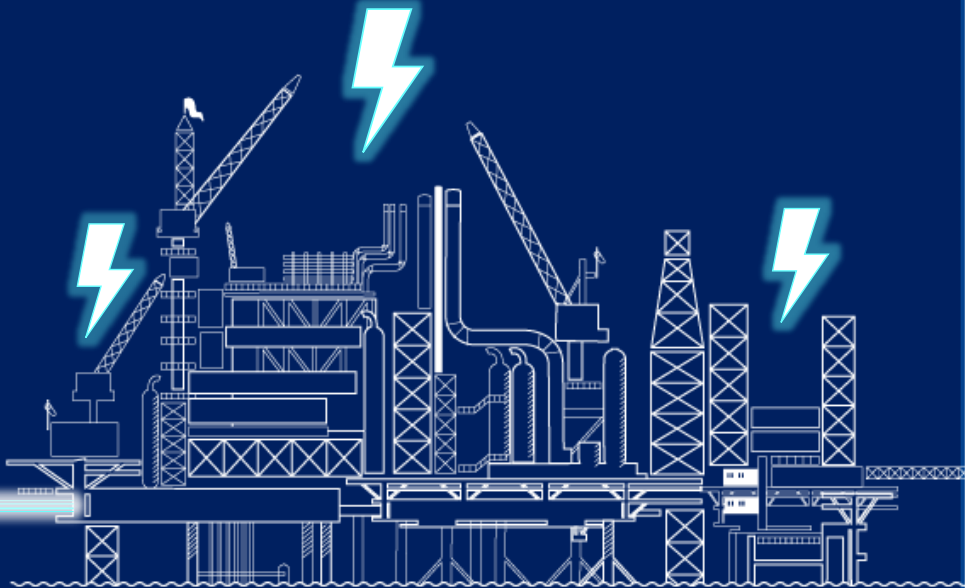


Less maintenance



Fewer flights

JOG is planning a major new hub with energy transition principles at its heart. We are a proud signatory of the United Nations Global Compact



It is our vision to provide cleaner, safe energy in the most responsible way